



tasarimmed[®]

TF-ERS Rail Fixator

Catalogue

Table of Contents	
Device Description.....	2
<i>Indications</i>	2
Contraindications	3
Pin Clamps.....	4
Rails	4
Distraction-Compression Unit	5
Additional Clamps	5
Connector Adapters	6
Half Pins.....	6
Instrument List	7

Warning!!!



This document is not a surgical technique.

This document shows all parts for the TF-ERS Rail Fixator

TF-ERS RAIL FIXATOR

Device Description

Tasarimmed TF-ERS Rail Fixator is an external fixator which is assembly of clamps, rail and distraction-compression unit. Clamps are inserted to Rail where they can slide on it. They can be connected to each other with distraction-compression units.

Rail fixator is connected to extremity with half pins.

Indications

Tasarimmed TF-ERS rail fixator is intended to stabilize bone segments (Limbs of adolescent and adult patients) for following indications:

- Fractures
- Joint fusion
- Joint distraction
- Bone transport
- Lengthening
- Angular deformity corrections

Tasarimmed TF-ERS rail fixator is not intended to replace healthy bone or to withstand the stresses of full weight bearing. The use of external supports (ie walking aids) are needed as a part of treatment.

Tasarimmed TF-ERS rail fixator is intended for professional use only. Surgeons who supervise the use of rail fixator must have broad knowledge and full awareness of external fixation techniques and procedures.

TF-ERS RAIL FIXATOR

Device Description

Contraindications

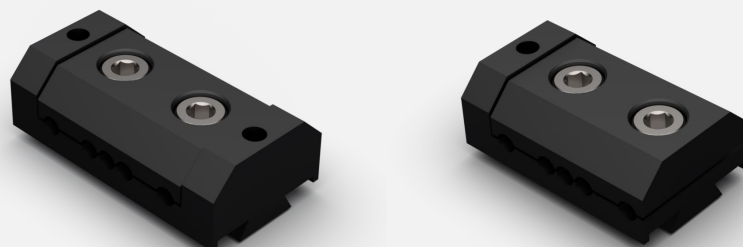
Contraindications include, but are not limited to:

1. Active infectious process or significant risk of infection (immunocompromise).
2. Signs of local inflammation.
3. Fever or leukocytosis.
4. Morbid obesity.
5. Pregnancy.
6. Mental illness.
7. Grossly distorted anatomy caused by congenital abnormalities.
8. Any other medical or surgical condition which would preclude the potential benefit of external fixator surgery,
9. Rapid joint disease, bone absorption, osteopenia, osteomalacia and/or osteoporosis.
10. Suspected or documented metal allergy or intolerance.
11. Any case not needing a bone graft and fusion.
12. Any case where the implant components selected for use would be too large or too small to achieve a successful result.
13. Any patient having inadequate tissue coverage over the operative site or inadequate bone stock or quality.
14. Any patient in which implant utilization would interfere with anatomical structures or expected physiological performance.
15. Any patient unwilling to follow postoperative instructions
16. Severe osteoporosis
17. Any case not described in the indications.

TF-ERS RAIL FIXATOR

Part List

Pin Clamps



Cat No	Description	Single Use / Reuseable
TF-6002C	Humerus Outer Clamp	Single Use
TF-6003C	Humerus Central Clamp	Single Use
TF-7000C	Outer Clamp	Single Use
TF-7001C	Central Clamp	Single Use

Rails



Cat No	Description	Single Use / Reuseable
TF-6002R	Humerus Short Rail	Single Use
TF-6003R	Humerus Medium Rail	Single Use
TF-7000R	Short Rail	Single Use
TF-7001R	Medium Rail	Single Use
TF-7002R	Long Rail	Single Use

TF-ERS FIXATOR

Part List

Distraction-Compression Unit



Cat No	Description	Single Use / Reuseable
TF-6002DC	Humerus Distraction-Compression Unit - Standart	Single Use
TF-6003DC	Humerus Distraction-Compression Unit - Long	Single Use
TF-7000DC	Distraction-Compression Unit - Standart	Single Use
TF-7001DC	Distraction-Compression Unit - Long	Single Use

Additional Clamps



Cat No	Description	Single Use / Reuseable
TF-6000-4	Humerus Swivel Clamp	Single Use
TF-7003	Swivel Clamp	Single Use
TF-6000-2	Humerus T-Clamp	Single Use
TF-1003	T-Clamp	Single Use

TF-ERS RAIL FIXATOR

Part List

Connector Adapters

Cat No	Description	Single Use / Reuseable
TF-6000-5	Humerus MAF Adapter	
TF-7004	MAF Adapter	
TF-7005	Ilizarov Adapter	





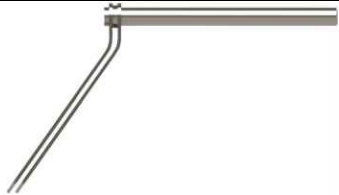




Half Pins*



Ref No	Description	Single Use / Reuseable
TAMF-S6125L30H	ISO 5832/1 Ø 6MM X 30 L125 HALF PIN	Single Use
TAMF-S6125L20H	ISO 5832/1 Ø 6MM X 20 L125 HALF PIN	Single Use
TAMF-S6125L10H	ISO 5832/1 Ø 6MM X 10 L125 HALF PIN	Single Use
TAMF-S6155L30H	ISO 5832/1 Ø 6MM X 30 L155 HALF PIN	Single Use
TAMF-S6155L20H	ISO 5832/1 Ø 6MM X 20 L155 HALF PIN	Single Use
TAMF-S6155L10H	ISO 5832/1 Ø 6MM X 10 L155 HALF PIN	Single Use
TAMF-S6180L30BL3	ISO 5832/1 Ø6MM X 30 L180 HALF PIN BL Ø3	Single Use
TAMF-S6180L30BL4	ISO 5832/1 Ø6MM X 30 L180 HALF PIN BL Ø4	Single Use
TAMF-S6180L30BL5	ISO 5832/1 Ø6MM X 30 L180 HALF PIN BL Ø5	Single Use
TAMF-S6200L50BL3	ISO 5832/1 Ø6MM X 50 L200 HALF PIN BL Ø3	Single Use
TAMF-S6200L50BL4	ISO 5832/1 Ø6MM X 50 L200 HALF PIN BL Ø4	Single Use
TAMF-S4150L10	ISO 5832/1 Ø 4MM X 10 L150 HALF PIN	Single Use
TAMF-S4150L20	ISO 5832/1 Ø 4MM X 20 L150 HALF PIN	Single Use
TAMF-S5180L20	ISO 5832/1 Ø 5MM X 20 L180 HALF PIN	Single Use
TAMF-S4180L30	ISO 5832/1 Ø4MM X 30 L180 HALF PIN	Single Use
TAMF-S4200L30	ISO 5832/1 Ø4MM X 30 L200 HALF PIN	Single Use
TAMF-S4150L30	ISO 5832/1 Ø4MM X 30 L150 HALF PIN	Single Use
TAMF-S5150L30	ISO 5832/1 Ø5MM X 30 L150 HALF PIN	Single Use
TAMF-S5180L30	ISO 5832/1 Ø5MM X 30 L180 HALF PIN	Single Use
TAMF-S5150L50	ISO 5832/1 Ø5MM X 50 L150 HALF PIN	Single Use
TAMF-S5180L50	ISO 5832/1 Ø5MM X 50 L180 HALF PIN	Single Use
TAMF-S6180L30	ISO 5832/1 Ø6MM X 30 L180 HALF PIN	Single Use
TAMF-S6200L30	ISO 5832/1 Ø6MM X 30 L200 HALF PIN	Single Use

- For all available half pin sizes please refer to Halfpin Catalogue

Instrument List

REF. NO	PRODUCT DESCRIPTION	Info	
SPD-02040402	Hex Driver, 90°	Reusable	
SPD-D27	Drill bit Ø2.7 mm	Single Use	
SPD-D32	Drill bit Ø3 mm	Single Use	
SPD-D42	Drill bit Ø4 mm	Single Use	
SPD-DG01	Drill Guide with Trocar	Reusable	
SPD-02040805	Ø4 mm Half Pin Driver	Reusable	
SPD-02040806	Ø5 mm Half Pin Driver	Reusable	
SPD-02040807	Ø6 mm Half Pin Driver	Reusable	
SPD-02040804	T – Handle	Reusable	

TF-TUBULAR FIXATOR

Symbols used in Packaging and their meanings



Indicates a medical device that has not been subjected to a sterilization process.



Indicates the manufacturer's batch code so that the batch or lot can be identified NOTE: Synonyms for "batch code" are "lot number" and "batch number"



Indicates the manufacturer's catalog number so that the medical device can be identified NOTE: Synonyms for "catalogue number" are "reference number" and "reorder number"



Indicates a medical device that is intended for one use, or for use on a single patient during a single procedure.



Indicates the need for the user to consult the instructions for use.



Indicates a medical device that should not be used if the package has been damaged or opened.



Indicates the medical device manufacturer, as defined in EU Directives



Symbol for date of manufacture. This symbol is accompanied by a date.



Indicates the date after which the medical device is not to be used.



Indicates the need for the user to consult the instructions for use for important cautionary information such as warnings and precautions that cannot, for a variety of reasons, be presented on the medical device itself.

©All rights reserved. B04-TDTG02-TF-ERS Rail Fixator Catalogue EN

Tasarimmed TF-ERS Fixator Catalogue Rev.0 16.07.2020

Tasarimmed Tibbi Mamuller San. Tic. A.S.

CE1984Topcular C. Setustu no.3 34055 Eyup, Istanbul Turkey www.tasarimmed.com.tr

Tel: 0090 212 674 22 44-45 Fax: 0090 212 674 2246

